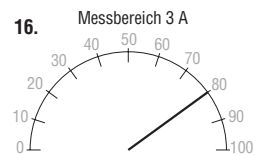
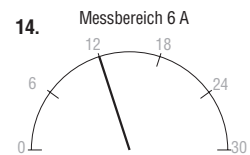
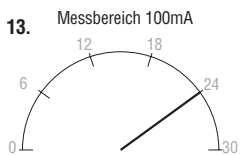
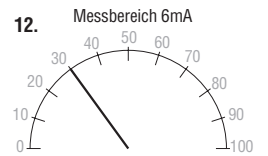
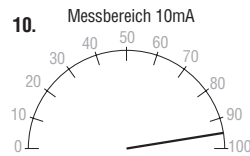
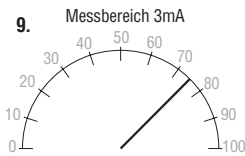
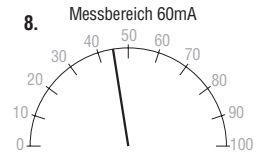
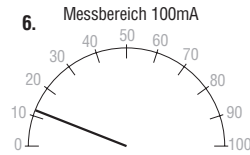
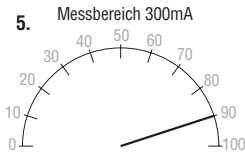
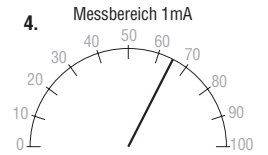
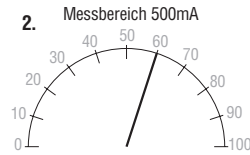
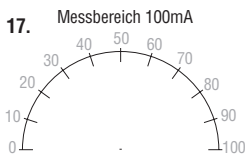


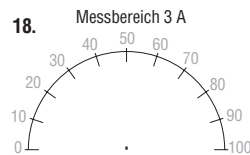
# Schreibe die aktuellen Messwerte jeweils unter die Skala!



## Jetzt umgekehrt: Zeichne die fehlenden Zeiger ein! A. Bergkemper, 12/99



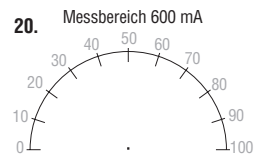
30 mA



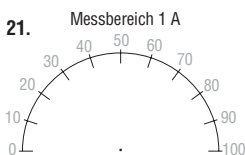
2,4 A



30 mA



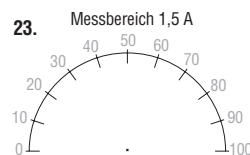
180 mA



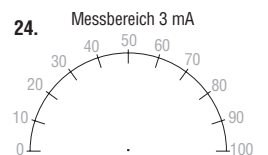
650 mA



1,2 A

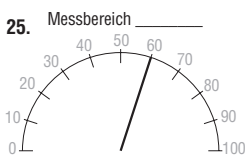


750 mA

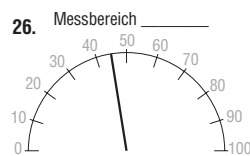


2,4 mA

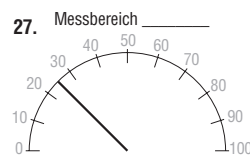
## Hier fehlt der richtige Messbereich. Ergänze!



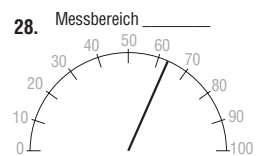
600 mA



2,7 A



750 mA



190 mA