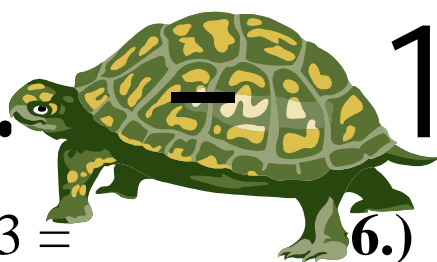


1. — 10.



1.) $2'071 \cdot 3 =$

6.) $2'563 \cdot 7 =$

2.) $5'964 \cdot 7 =$

7.) $5'950 \cdot 7 =$

3.) $8'561 \cdot 7 =$

8.) $8'214 \cdot 3 =$

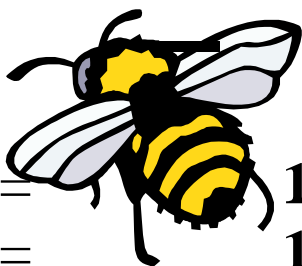
4.) $707 \cdot 4 =$

9.) $5'410 \cdot 3 =$

5.) $3'201 \cdot 3 =$

10.) $5'964 \cdot 8 =$

11. — 20.



11.) $7'345 \cdot 7 =$

16.) $1'983 \cdot 3 =$

12.) $1'093 \cdot 8 =$

17.) $2'771 \cdot 6 =$

13.) $7'961 \cdot 2 =$

18.) $4'065 \cdot 8 =$

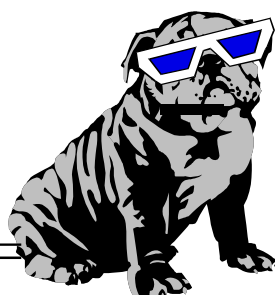
14.) $1'877 \cdot 3 =$

19.) $2'007 \cdot 3 =$

15.) $886 \cdot 7 =$

20.) $2'241 \cdot 6 =$

21. — 30.



21.) $9'838 \cdot 8 =$

26.) $2'357 \cdot 2 =$

22.) $2'617 \cdot 7 =$

27.) $856 \cdot 6 =$

23.) $8'851 \cdot 8 =$

28.) $6'790 \cdot 6 =$

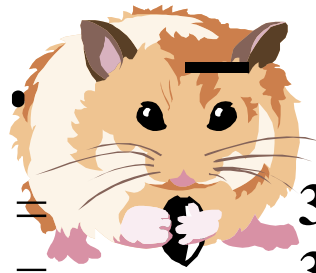
24.) $4'681 \cdot 3 =$

29.) $4'789 \cdot 5 =$

25.) $8'447 \cdot 7 =$

30.) $835 \cdot 3 =$

31. — 40.



31.) $5'954 \cdot 4 =$

32.) $5'326 \cdot 9 =$

33.) $983 \cdot 9 =$

34.) $8'679 \cdot 3 =$

35.) $9'667 \cdot 3 =$

36.) $6'355 \cdot 2 =$

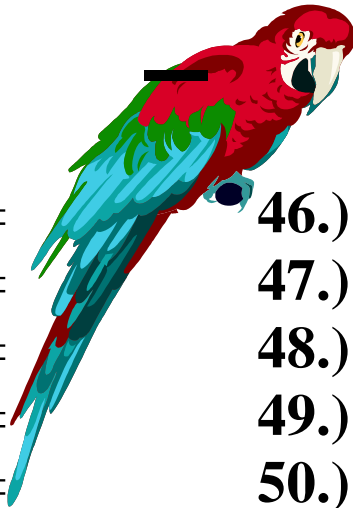
37.) $2'301 \cdot 7 =$

38.) $1'311 \cdot 3 =$

39.) $3'613 \cdot 9 =$

40.) $3'859 \cdot 2 =$

41. — 50.



41.) $9'034 \cdot 7 =$

42.) $1'702 \cdot 3 =$

43.) $9'366 \cdot 2 =$

44.) $6'471 \cdot 9 =$

45.) $8'967 \cdot 5 =$

46.) $8'737 \cdot 3 =$

47.) $703 \cdot 3 =$

48.) $6'306 \cdot 4 =$

49.) $2'125 \cdot 5 =$

50.) $9'389 \cdot 7 =$

Lösung: Multiplikation mit einstelligen Faktoren, 4. Klasse

1	2'071	*	3	=	6'213
2	5964	*	7	=	41748
3	8561	*	7	=	59927
4	707	*	4	=	2'828
5	3'201	*	3	=	9'603
6	2'563	*	7	=	17'941
7	5'950	*	7	=	41'650
8	8'214	*	3	=	24'642
9	5410	*	3	=	16230
10	5'964	*	8	=	47'712
11	7'345	*	7	=	51'415
12	1'093	*	8	=	8'744
13	7'961	*	2	=	15'922
14	1'877	*	3	=	5'631
15	886	*	7	=	6'202
16	1'983	*	3	=	5'949
17	2'771	*	6	=	16'626
18	4'065	*	8	=	32'520
19	2'007	*	3	=	6'021
20	2'241	*	6	=	13'446
21	9'838	*	8	=	78'704
22	2'617	*	7	=	18'319
23	8'851	*	8	=	70'808
24	4'681	*	3	=	14'043
25	8447	*	7	=	59129
26	2'357	*	2	=	4'714
27	856	*	6	=	5136
28	6'790	*	6	=	40'740
29	4'789	*	5	=	23'945
30	835	*	3	=	2505
31	5954	*	4	=	23816
32	5'326	*	9	=	47'934
33	983	*	9	=	8'847
34	8'679	*	3	=	26'037
35	9'667	*	3	=	29'001
36	6355	*	2	=	12710

37	2'301	*	7	=	16'107
38	1'311	*	3	=	3'933
39	3'613	*	9	=	32'517
40	3'859	*	2	=	7'718
41	9'034	*	7	=	63'238
42	1'702	*	3	=	5'106
43	9'366	*	2	=	18'732
44	6'471	*	9	=	58'239
45	8'967	*	5	=	44'835
46	8'737	*	3	=	26'211
47	703	*	3	=	2'109
48	6'306	*	4	=	25'224
49	2'125	*	5	=	10'625
50	9'389	*	7	=	65'723