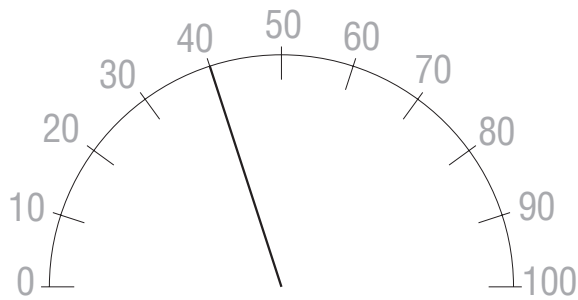
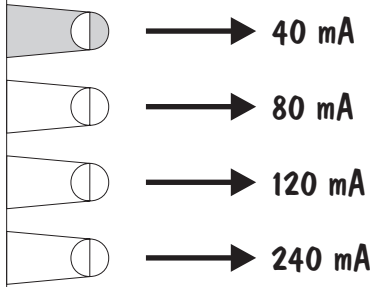


© 2000 A. Bergkemper

Wieviel Strom fließt durch das Messgerät?

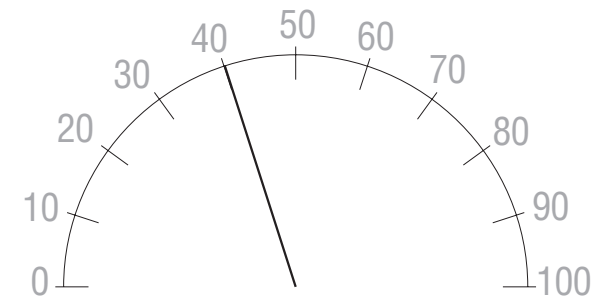
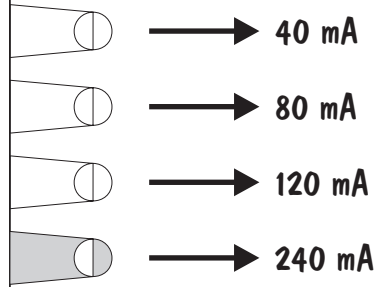
Messbereich 100mA



© 2000 A. Bergkemper

Wieviel Strom fließt durch das Messgerät?

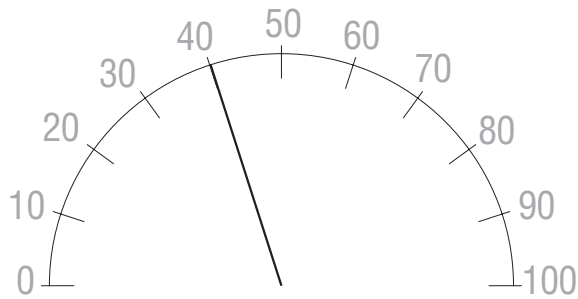
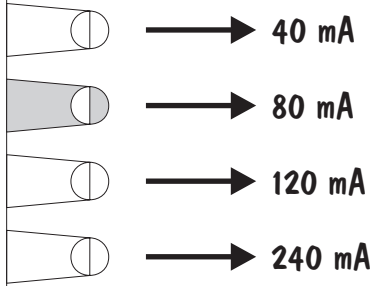
Messbereich 600mA



© 2000 A. Bergkemper

Wieviel Strom fließt durch das Messgerät?

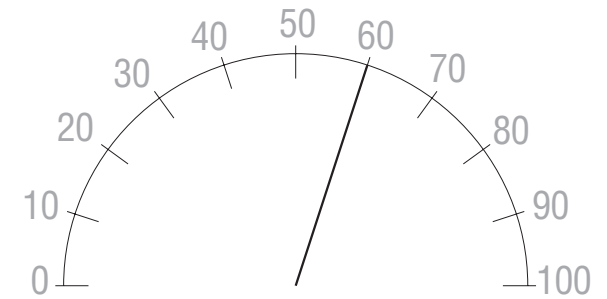
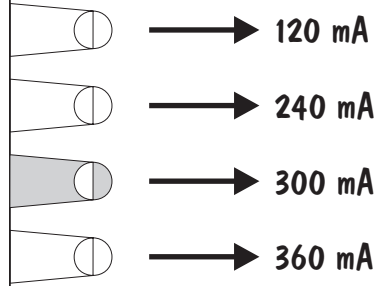
Messbereich 200mA



© 2000 A. Bergkemper

Wieviel Strom fließt durch das Messgerät?

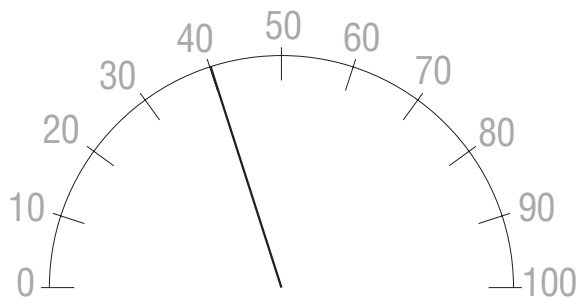
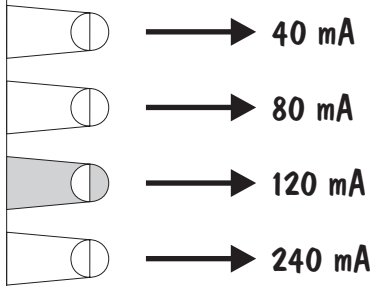
Messbereich 500mA



© 2000 A. Bergkemper

Wieviel Strom fließt durch das Messgerät?

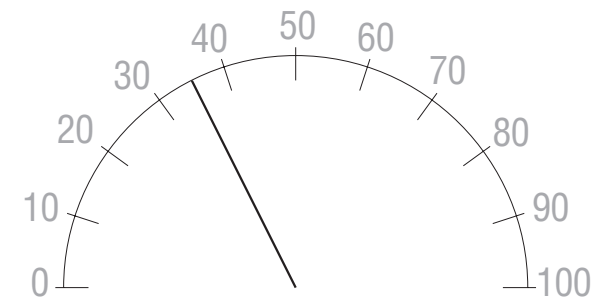
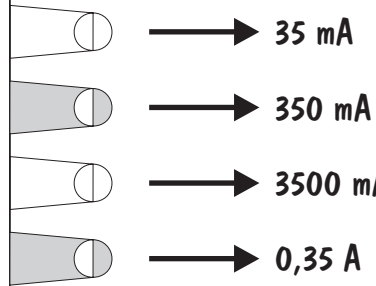
Messbereich 300mA

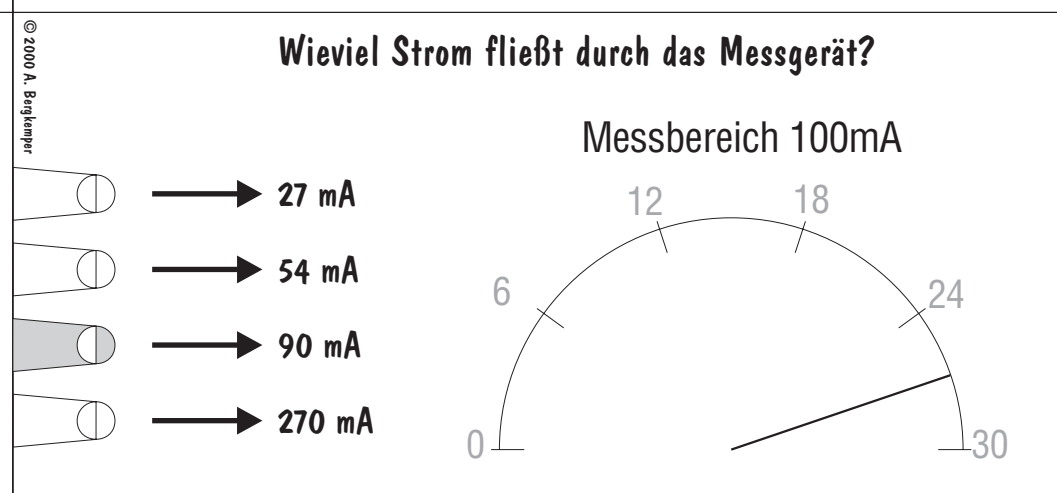
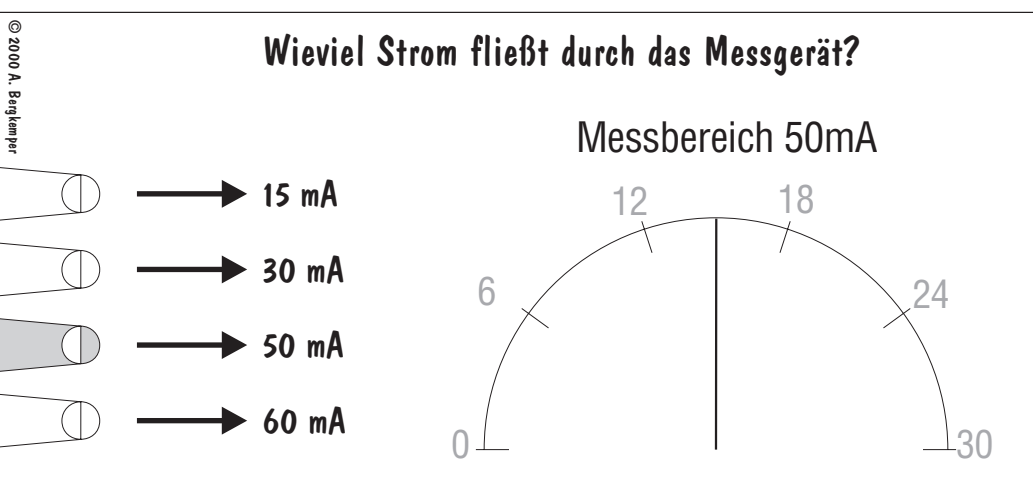
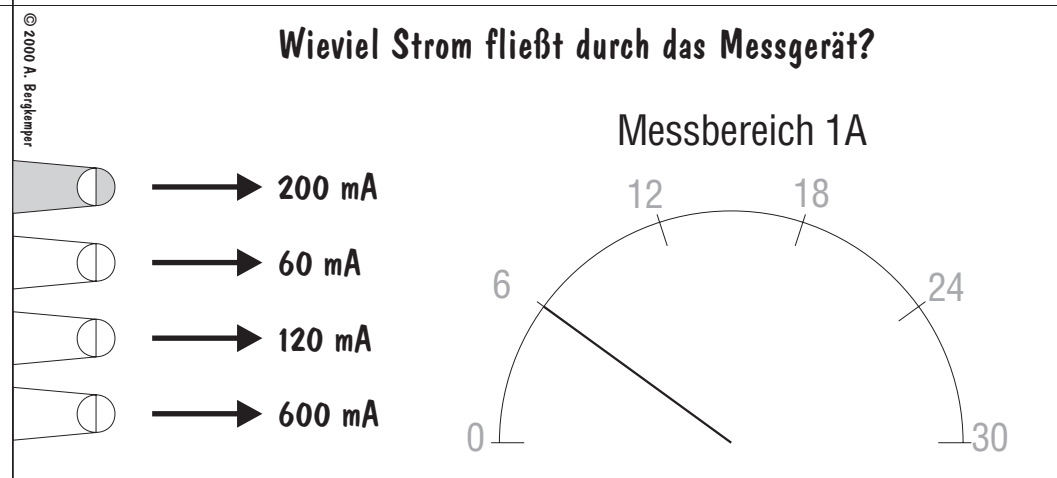
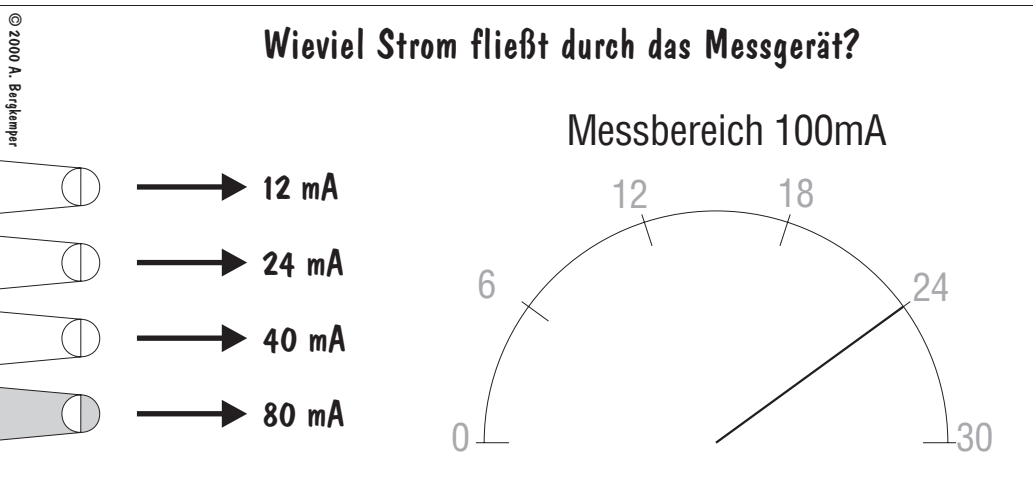
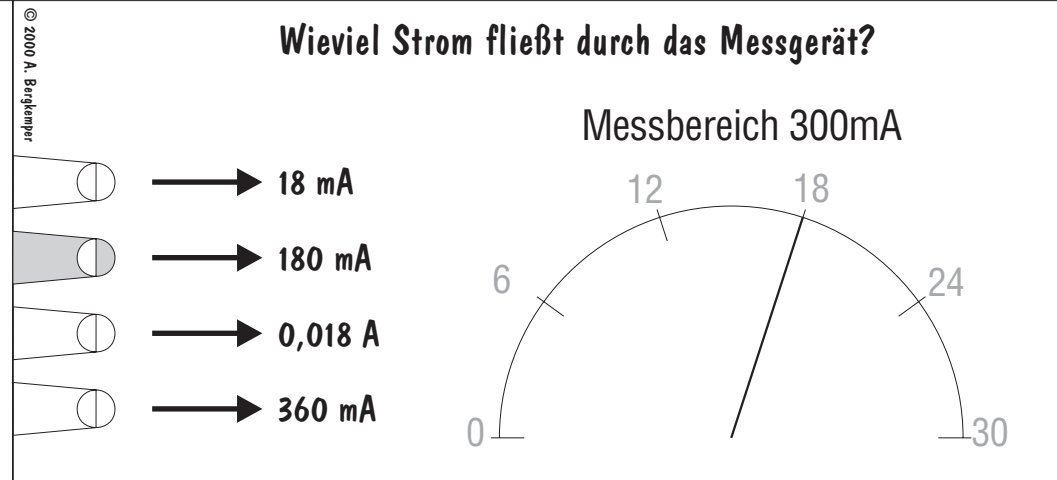
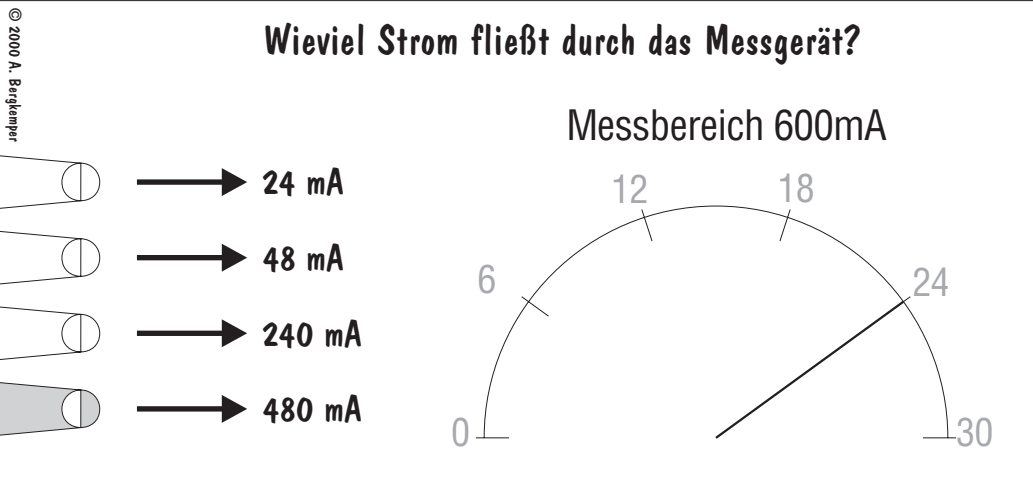


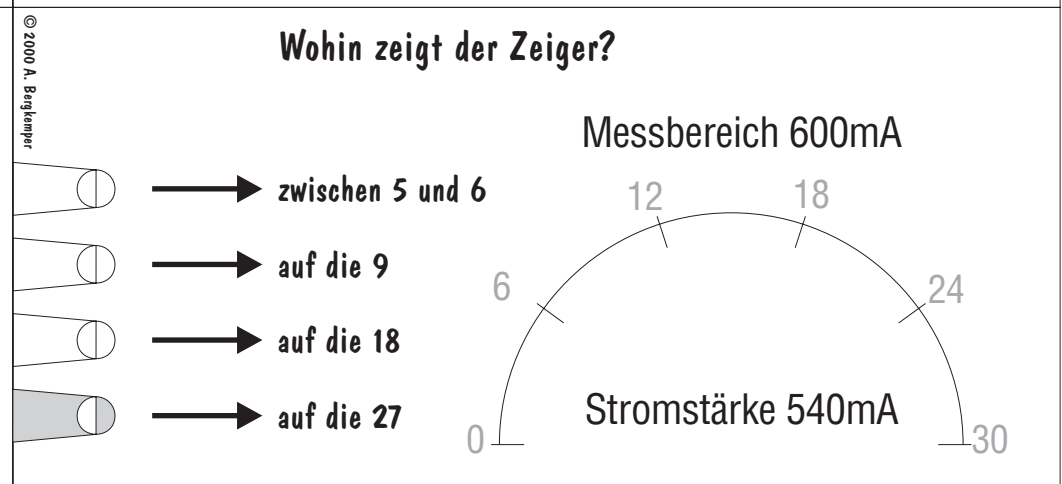
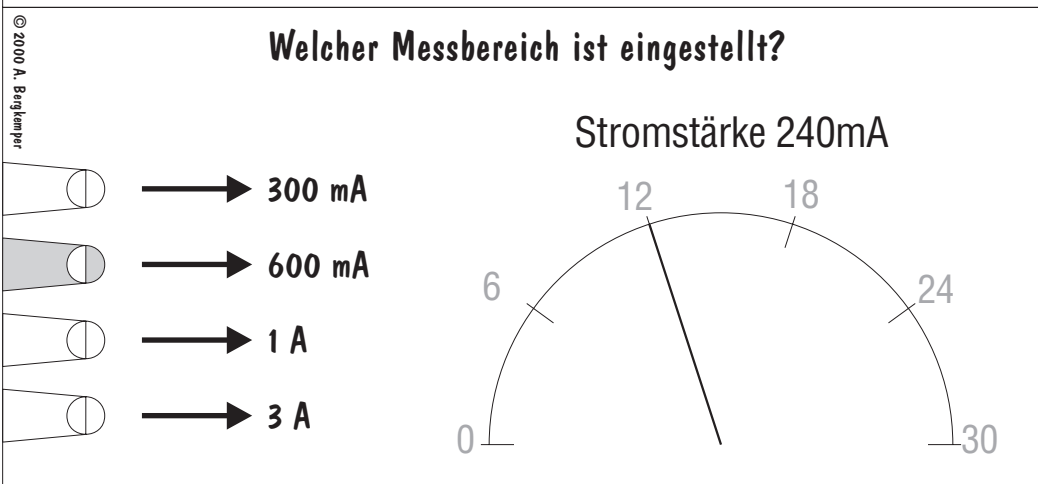
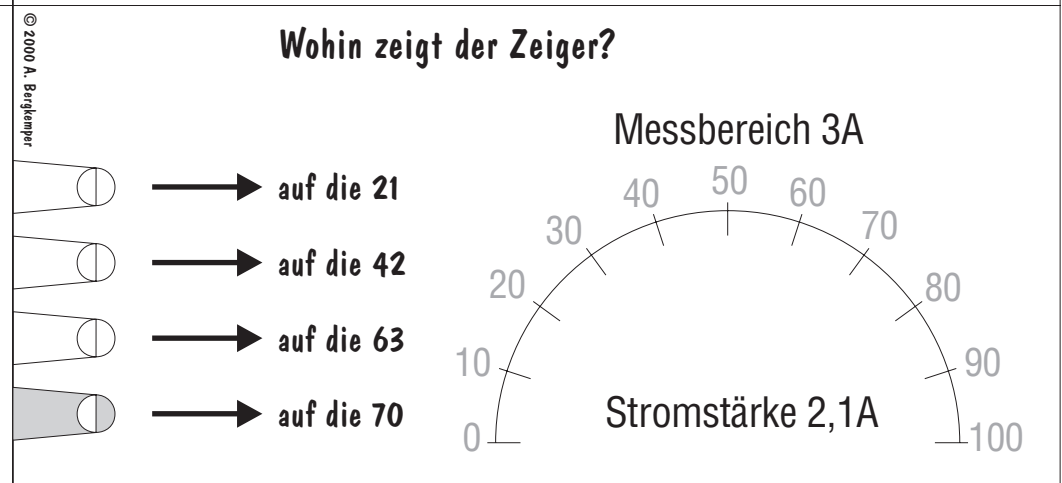
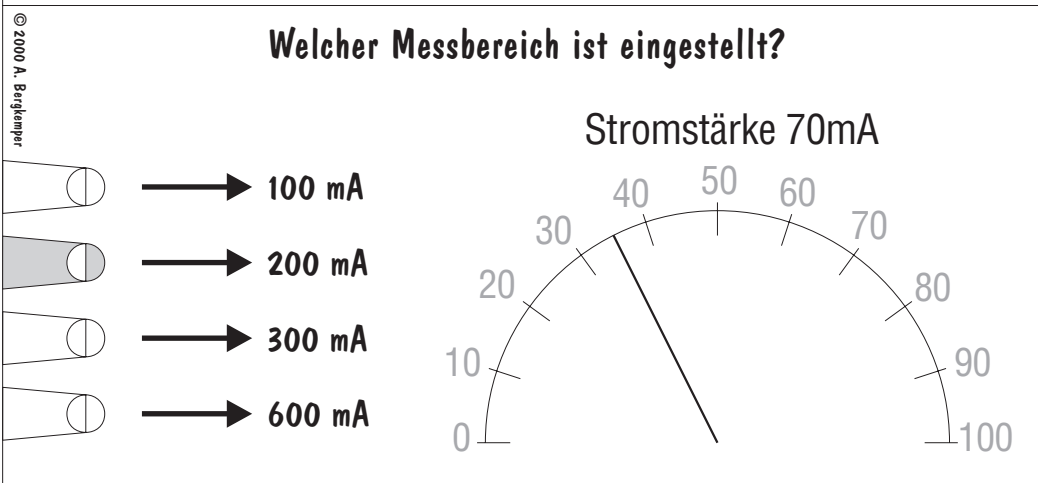
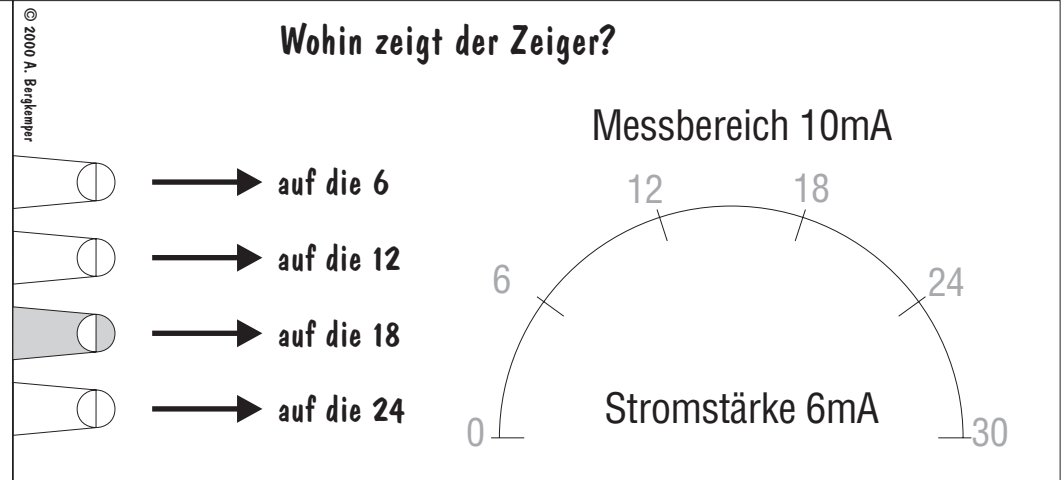
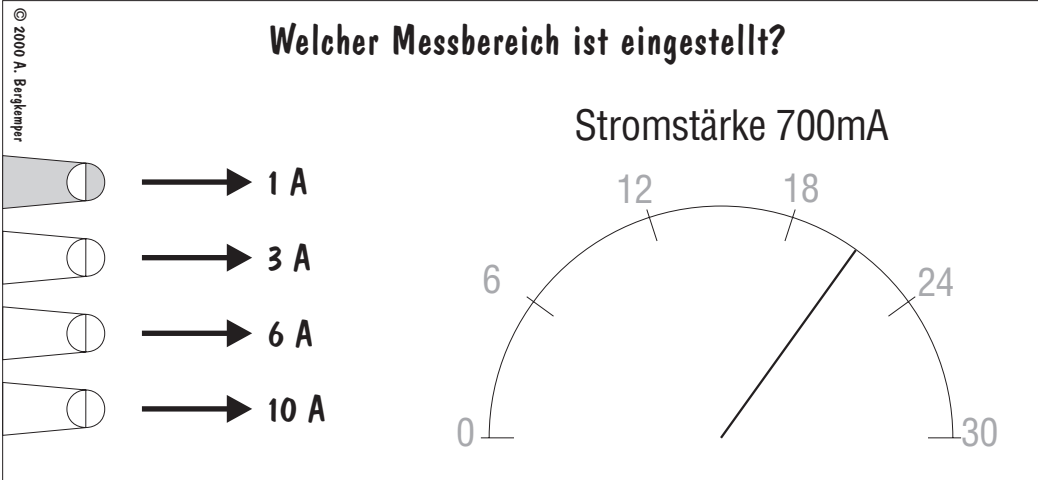
© 2000 A. Bergkemper

Wieviel Strom fließt durch das Messgerät?

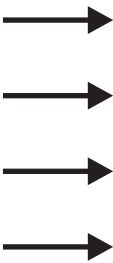
Messbereich 1A



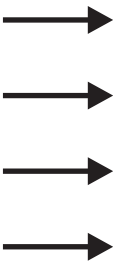




© 2000 A. Bergkemper

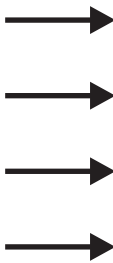


© 2000 A. Bergkemper

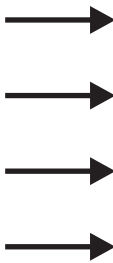


Holzkonstruktion 64,5x150mm für zum Einlegen der Kärtchen, an der linken Seite vier Bohrungen, die sich mit den Löchern der Kärtchen decken müssen. An Stelle von Holz könnte man die Konstruktion auch aus Epoxydharz anfertigen (Platinenmaterial). Zur Führung des Stifts sollten dann vier Stücke des roten gelochten Materials von Opitek verwendet werden.

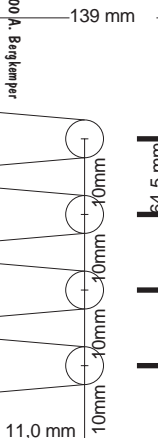
© 2000 A. Bergkemper



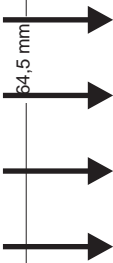
© 2000 A. Bergkemper



© 2000 A. Bergkemper



Alle Maße innen!



© 2000 A. Bergkemper

