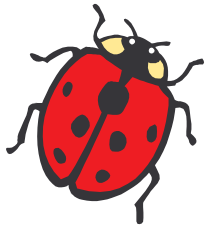
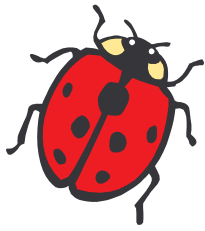
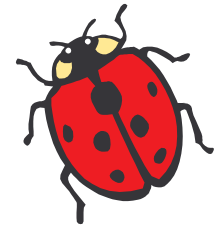


Division durch eine einstellige Zahl



1		2	3		4
		5	✿		
6	7			8	9
✿			✿		✿
10		11		12	13
		14			
15			✿	16	



waagerecht

1 $5336 : 8 =$

3 $1745 : 5 =$

5 $2655 : 9 =$

6 $5694 : 6 =$

8 $5696 : 8 =$

10 $3436 : 4 =$

12 $4614 : 6 =$

14 $3556 : 7 =$

15 $2883 : 3 =$

16 $6282 : 9 =$

senkrecht

1 $5112 : 8 =$

2 $6561 : 9 =$

3 $1428 : 4 =$

4 $6664 : 7 =$

7 $1365 : 3 =$

9 $1372 : 7 =$

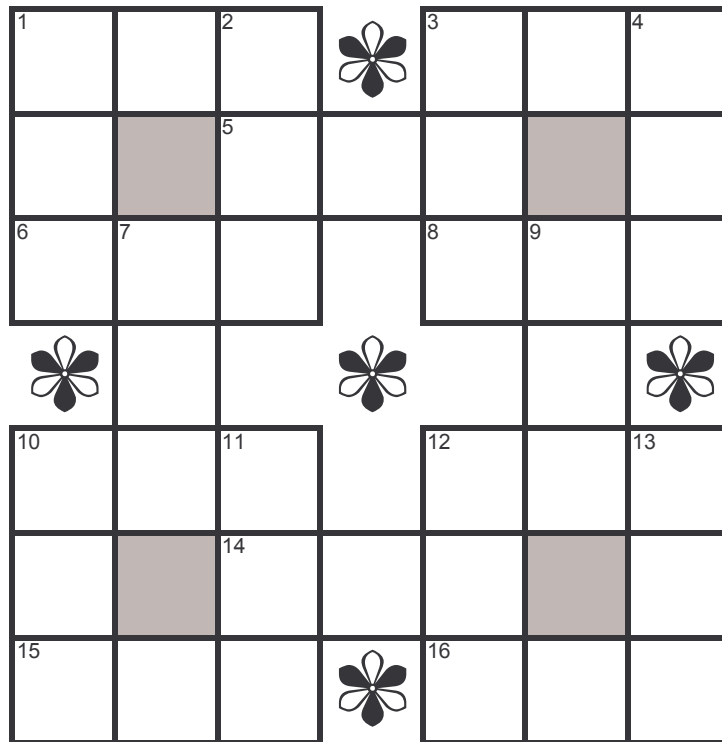
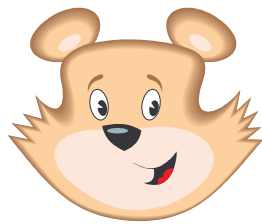
10 $7821 : 9 =$

11 $4755 : 5 =$

12 $6288 : 8 =$

13 $5808 : 6 =$

Division durch eine zweistellige Zahl bis 19



waagerecht

1 $17.043 : 19 =$

3 $8.376 : 12 =$

5 $14.569 : 17 =$

6 $5.970 : 15 =$

8 $8.945 : 18 =$

10 $7.126 : 14 =$

12 $11.424 : 12 =$

14 $6.090 : 15 =$

15 $12.530 : 14 =$

16 $5.738 : 19 =$

senkrecht

1 $13.651 : 17 =$

2 $11.820 : 15 =$

3 $8.762 : 13 =$

4 $13.968 : 16 =$

7 $16.380 : 18 =$

9 $10.505 : 11 =$

10 $6.216 : 12 =$

11 $15.120 : 16 =$

12 $12.519 : 13 =$

13 $5.168 : 19 =$

Lösung Division einstellig

¹ 6	6	² 7		³ 3	4	⁴ 9
3		⁵ 2	9	5		5
⁶ 9	⁷ 4	9		⁸ 7	⁹ 1	2
	5				9	
¹⁰ 8	5	¹¹ 9		¹² 7	6	¹³ 9
6		¹⁴ 5	0	8		6
¹⁵ 9	6	1		¹⁶ 6	9	8

Lösung Division zweistellig

¹ 8	9	² 7		³ 6	9	⁴ 8
0		⁵ 8	5	7		3
⁶ 3	⁷ 9	8		⁸ 4	⁹ 9	7
	1				5	
¹⁰ 5	0	¹¹ 9		¹² 9	5	¹³ 2
1		¹⁴ 4	0	6		7
¹⁵ 8	9	5		¹⁶ 3	0	2